



**REGIONAL SPECIALISED METEOROLOGICAL CENTRE-TROPICAL CYCLONES, NEW DELHI
TROPICAL WEATHER OUTLOOK**

DEMS-RSMC TROPICAL CYCLONES NEW DELHI DATED 10.04.2021

TROPICAL WEATHER OUTLOOK FOR NORTH INDIAN OCEAN (THE BAY OF BENGAL AND ARABIAN SEA) VALID FOR NEXT 120 HOURS ISSUED AT 0600 UTC OF 10.04.2021 BASED ON 0300 UTC OF 10.04.2021.

BAY OF BENGAL:

SCATTERED LOW AND MEDIUM CLOUDS WITH EMBEDDED WEAK TO MODERATE CONVECTION OVER NORTHWEST BAY OF BENGAL.

PROBABILITY OF CYCLOGENESIS(FORMATION OF DEPRESSION) DURING NEXT 120 HRS:

24 HOURS	24-48 HOURS	48-72 HOURS	72-96 HOURS	96-120 HOURS
NIL	NIL	NIL	NIL	NIL

ARABIAN SEA:

SCATTERED LOW AND MEDIUM CLOUDS WITH EMBEDDED ISOLATED MODERATE TO INTENSE CONVECTION OVER SOUTHEAST ARABIAN SEA COAST AND NEIGHBOURHOOD.

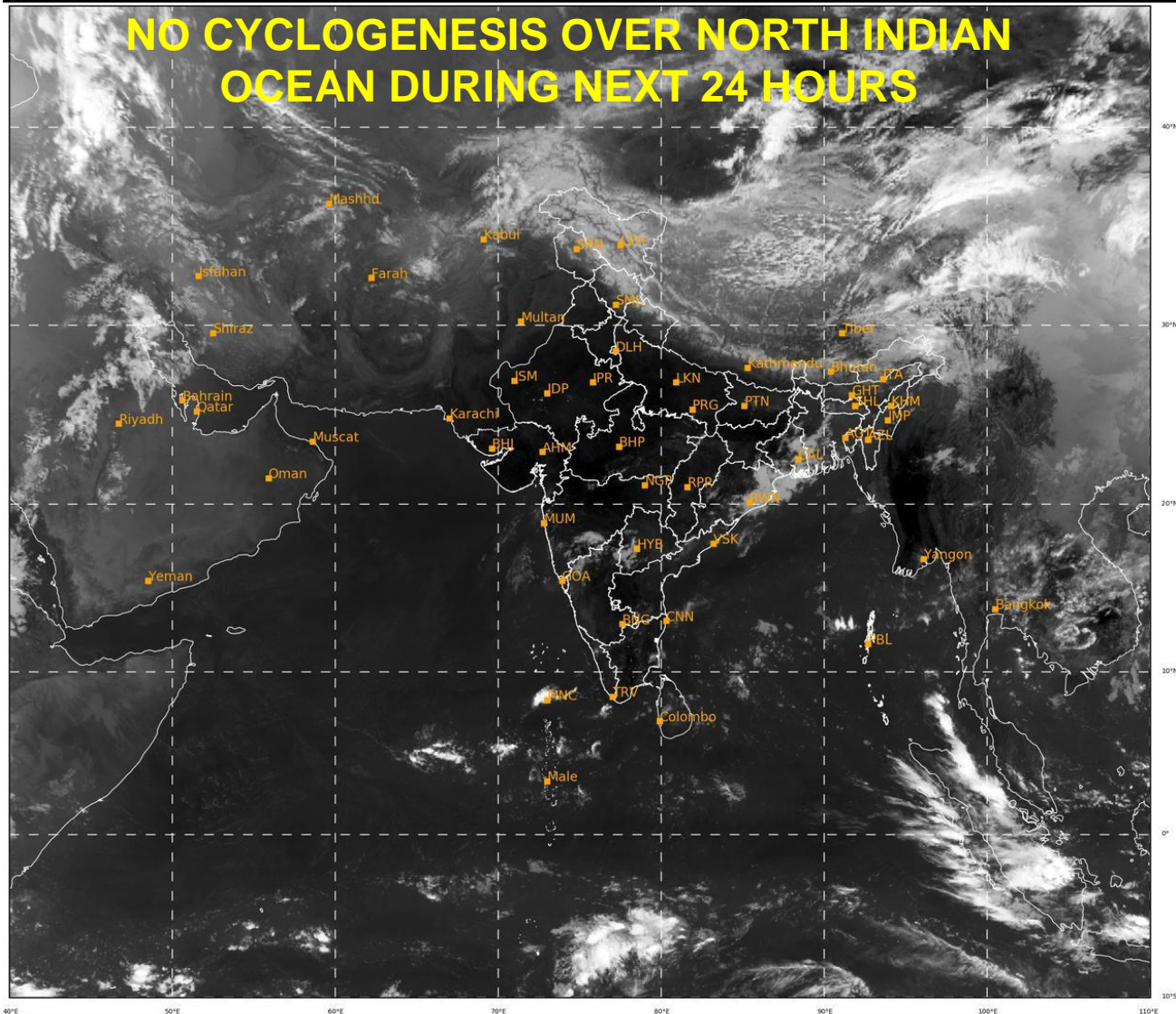
PROBABILITY OF CYCLOGENESIS(FORMATION OF DEPRESSION) DURING NEXT 120 HRS :

24 HOURS	24-48 HOURS	48-72 HOURS	72-96 HOURS	96-120 HOURS
NIL	NIL	NIL	NIL	NIL

REMARKS: Nil



NO CYCLOGENESIS OVER NORTH INDIAN OCEAN DURING NEXT 24 HOURS



420

916

IMD, DELHI

PROBABILITY OF CYCLOGENESIS (FORMATION OF DEPRESSION):NIL: 0%, LOW: 1-25%, FAIR: 26-50%, MODERATE: 51-75% AND HIGH: 76-100%

✚ This is a guidance Bulletin for the WMO/ESCAP Panel Member countries,. Please visit respective National websites for Country specific Bulletins